

# Coverland

## Cupola

Coverland Cupola roof tile is a strong, deep rolled profile with bold curves, denoting an unmistakable Mediterranean character and comply with SANS 542 for concrete roof tiles when used with Coverland fittings to suit the design criteria.

### TILE FINISHES

#### Through Colour

A single-shaded base colour throughout the roof tile displays a distinct surface.

#### Farmhouse

The through colour tile is accentuated by a second colour, randomly applied to give it a natural rustic appearance.

#### Vibrant

Our technologically advanced Vibrant coating ensures deep, rich colours, and colour uniformity across the roof. It also ensure no efflorescence appears after installation.

### TECHNICAL DATA

Overall size of tile (mm)	420 x 330
Approx mass per tile (kg)	4.7 - 4.9
Linear cover per tile (mm)	300

### STRUCTURAL DATA

The roof structure specifications should comply with the regulations in your area.

Minimum pitch requirements	17° to 25°	26° and over
Rafter Centres	Up to 760 mm 38 x 38 Batten	Up to 950 mm 38 x 50 mm Batten on edge
Headlap (mm)	100	75
Batten Centres (mm)	320	345
Batten per m <sup>2</sup> (m)	3.13*	2.9*
Number of tiles per m <sup>2</sup>	10.42	9.66
Approx mass of tile m <sup>2</sup> (kg)	±51	±47
Laying application	Straight bond	Straight bond
Undertile Membrane/ Radenshield™ recommended at all pitches	Mandatory	Recommended

\*No allowance for wastage.

### PACKAGING

Number of tiles per pallet	210
----------------------------	-----

DISCLAIMER: The colour of these illustrations may vary due to the printing process. Coverland recommends that you view actual tile samples before reaching a purchase decision. \*Based on comparative research done on roof tiles vs metal roof installations. Our profiles are region specific.

**G** Gauteng

**EC** Port Elizabeth  
East London

**CT** Cape Town

**K** Kwa-Zulu Natal

**P** Polokwane



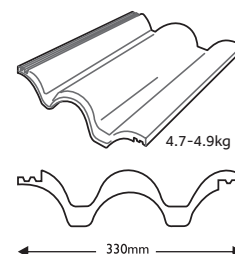
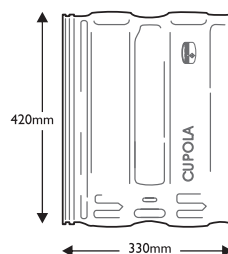
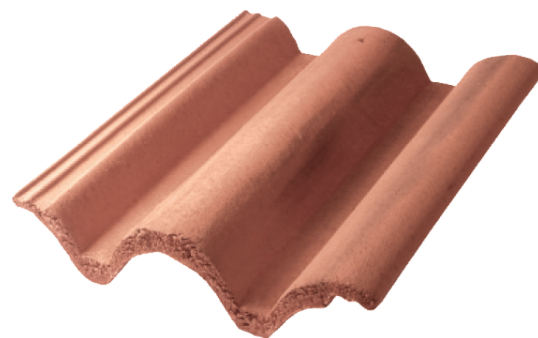
Cost Effective<sup>1</sup>



Aesthetics



Durable



Through Colour  
Terracotta  
**G P**



Through Colour  
Slate Grey  
**G P**



Farmhouse  
Kalahari  
**EC**



Farmhouse  
Terracotta  
**EC**



# Coverland

## STRUCTURAL AND ENGINEER SPECIFICATIONS

Coverland Cupola, to comply with SANS 542 for concrete roof tiles, and Coverland fittings to suit the design criteria secured with Coverland non-corrodible clout nails, as supplied by Coverland, long enough to penetrate the battens to 2/3 of its depth. Coverland Concrete Roof Tiles are to be nailed and/or clipped to resist wind uplift in accordance with the existing SABS codes of practise and recommended fixing specifications for your area, Coverland Concrete Cupola tiles must be laid in a straight bond.

Coverland Concrete Roof Tiles at a minimum of 17° degrees pitch for 38x38mm timber battens, spaced at a minimum of 320mm and a maximum of 345mm c/c on 38x114mm SAP grade 4 timber rafter and 38x152mm SAP grade 4 tie beam maximum specification at 900mm c/c as per Engineer specification on 38x114mm SAP grade 4 timber wall plate with a Coverland Single-Sided or Double-Sided Residential Radenshield, to be nailed to the rafters with Coverland non-corrodible Clout nails, and trusses to comply with SABS 563 softwood structural and Engineers specifications and battens to comply with SABS 653 softwood battens and brandering – battens joints must meet halfway across the top face of a rafter and batten nails must be Coverland non-corrodible 3,35mm in diameter long enough to penetrate the rafter to a depth of 55mm.

## SECURE YOUR ROOF

Proper installation is essential to ensure both health and safety. Temperature fluctuations and environmental factors such as wind or rain can cause building materials to expand or contract, often resulting in unusual attic noises. To prevent this, all insulation overlaps should be securely sealed with aluminium tape to minimise flapping sounds and reduce the risk of fire and smoke spread.

To further enhance roof integrity and safety, Coverland offers storm clips and non-corrodible clout nails that are quick and easy to install. The nails are designed to penetrate the battens to two-thirds of their depth, ensuring a secure and professional fixing of concrete tiles. Our storm clips are precisely engineered to match each tile profile, offering reliable and long-lasting protection against wind uplift and tile slippage—fully aligned with SABS codes of practice and regional fixing specifications. Additionally, these fittings provide an added layer of security against unauthorised roof access.

See our Technical Guide for your area's specifications.

## INTENSE PRODUCT TESTING

Our roofing products are tested in a wind tunnel unique to the industry, simulating wind and rain conditions found in a wide range of climate zones worldwide, including situations which typically arise only every 50 years. BMI only releases the new roofing materials when all trials as well as several hardness and long-term ageing tests have been successful.

## GUARANTEE

A lot can change in 30 years, but your roof doesn't have to. With a track record of just over 70 years and the backing of BMI Technical Centre, we are proud to introduce our **30 Year Roof Tile Concrete Guarantee**.

Your roof is your protection from the elements, your shelter and with our guarantee, your peace of mind. Our concrete tiles are guaranteed against the event of damage to the weather resistance of the product resulting from a manufacturing defect. In the unlikely event that damage occurs, Coverland will repair the affected product for the lifetime of the guarantee.



## EFFLORESCENCE

Efflorescence, often referred to as "lime bloom", is a natural phenomenon and is found in products containing cement. It is a white deposit which appears on the surface of all concrete based products. Efflorescence is a temporary condition, and does not affect the functional properties of the product. Wind and rain will gradually remove the deposit and the true colour of the tile will be restored.

## #itsneverjustarroof

GUARANTEE DISCLAIMER: T's & C's apply. For more information please contact your sales representative or email us.



**BMI Coverland (Pty) Ltd**  
Block 11 Bridgeview, Constantia Office Park, Roodepoort, Gauteng, South Africa  
+27 11 222 7300 | [info.sa@bmigroup.com](mailto:info.sa@bmigroup.com) | [www.bmigroup.com/za](http://www.bmigroup.com/za)